

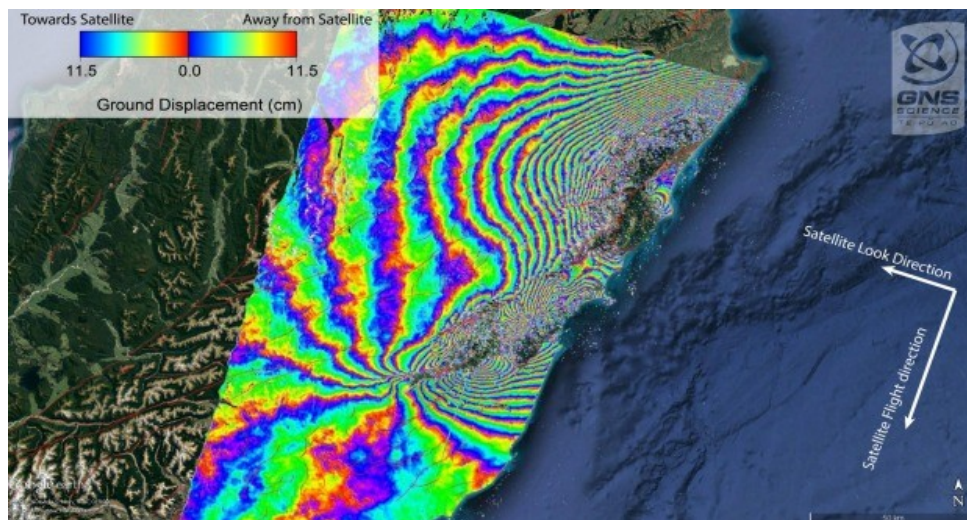
# Shunters Special

## *Kaikoura Coast Earthquake*

Mother nature has a huge influence on all lives in so many ways and aspects and when 'she' decides to stir herself and shift position then we mere mortals are simply just pawns in the game.

We think we can create many great engineering feats to satisfy our needs and we often believe that we can tame the environment and adapt it to our requirements but when humans feel the wrath of nature either by storms, tsunamis, or in our case, earthquakes then we are defenceless.

On November 14 at 12.02am the whole of New Zealand was struck by a 7.8 earthquake with its epicentre near Kaikoura where the damage to houses, the transportation links and the rocky coastline was considerable.



This image is an interferogram, produced using data from a Japanese Space Agency satellite. Each set of rainbow-coloured contours represent 11.5cm of movement. Where the coloured contours are closest together is where the largest changes in land motion are occurring.

We have only utilised the photographs of the railway as that is our primary interest and we wish to acknowledge the photographer, Tim Burt.

The reinstatement of both the road and rail will be difficult , costly and very time-consuming and it is only now that the real level of damage is being discovered. The decisions for the powers will be demanding and it is to be hoped that they are expedient and must not be daunted by the task. We came across this set of photos by a photographer, Tim Burt, who has travelled into the area and we would like to share the damage, the forces of nature, the challenges which will face the engineers of New Zealand Rail to reinstate the vital rail link between Picton and Christchurch. The prediction is that it will take longer to restore than the main highway as it is much more of an investment in infrastructure - at least a year plus, maybe even two years. It is absolutely crucial that we get these assets back. Pretty much the entire region is in dire straits, and without the rail and road link along the east coast the situation won't improve.















**Cyril the Shunter is horrified that the Picton to Christchurch line is munted. He despairs for his fellow shunters in the Picton rail marshalling yards.**







A train travelling through the area has been trapped, the driver escaped and already it has been looted.

Myrtle of the Refreshment Rooms is distraught as her lasses she has trained in the past will not be working and serving in the restaurant bar of the Tranz Scenic train this season and possibly into the next season.